

# Accessibility

Project: **org.manager**  
Classification: **Public**  
Version: **1.0**  
As of: **March 22 2022**

Ingentis Softwareentwicklung GmbH  
Raudtner Str. 7, 90475 Nürnberg/Germany  
Tel: +49 (911) 98 97 59-0  
Fax: +49 (911) 98 97 59-99  
E-Mail: [mail@ingentis.de](mailto:mail@ingentis.de)

Geschäftsführer:  
Thomas Eichinger  
Michael Grimm  
Jürgen Kreppner  
Wolfgang Schuller

Postbank Nürnberg  
Swift-Code/BIC:  
PBNK-DEFF760  
IBAN:  
DE64 7601 0085 0413737 858

USt-IdNr: DE186953155  
Steuer-Nr.:  
241/129/31461  
Amtsgericht Nürnberg  
HRB: 14491

## Accessible operation of org.manager

Since version 21.04, Ingentis org.manager allows barrier-free operation of the created org charts. This includes two basic functions:

- Keyboard operation
- Read-aloud capability for the hierarchy trees (screen reader)

## Requirements

- Ingentis org.manager version 21.04 or higher
- Use of server output
- Integration must be done by an Ingentis employee

## Keyboard operation

For a server output a keyboard operation can be switched on by an Ingentis consultant in three levels. This works in all server, SuccessFactors as well as Consodalis outputs. Please note: The higher the level of accessibility, the greater the performance degradation. While level 1 slows down the output only minimally, perspectives at level 3 (especially when displaying multiple layers) are slower than usual.

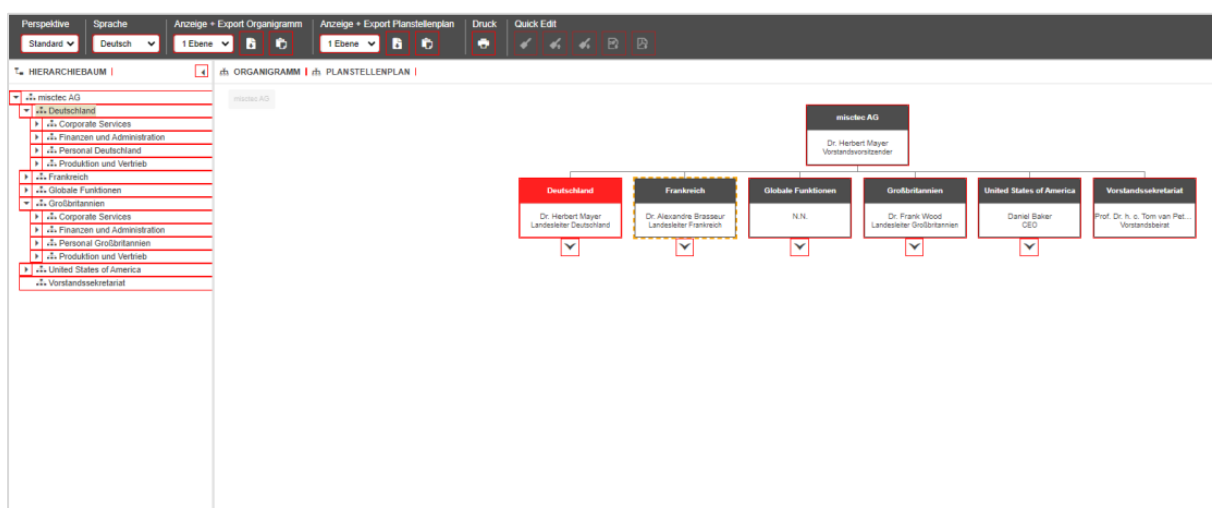


Figure 1: Elements that can be reached with the keyboard are outlined in red in the output.

- Level 1: In principle, the tab key can be used to navigate in the entire perspective. Exceptions are: Drag&Drop, tooltips, window resizing, and the org chart (including all other data views).
- Level 2: Same functions as Level 1, but now also immediately initialized boxes and hotspots in the org chart are accessible via the Tab key. Exceptions for Level 2 are BigData views, non-initialized org chart boxes, and charts.
- Level 3: Same as Level 2, but now boxes and hotspots are also accessible, which are only drawn when scrolling.

## Read aloud capability (screen reader)

In addition to keyboard operation, it is also possible to make a server output compatible for screen readers. Attention: The screen reader compatibility only includes the hierarchy tree - the organization chart or diagrams cannot be read out! This setting must also be adopted by an Ingentis employee.

## Strong contrasts and large fonts

The readability of the organization charts can be further enhanced by creating an additional perspective with high-contrast colors and large fonts. Here, consultation should be held with an Ingentis employee.